

The logo for Marcon, featuring a red stylized 'M' shape above the word 'marcon' in white lowercase letters.

"The heaventree of stars hung
with humid nightblue fruit."
James Joyce
Ulysses

"A day of dappled seaborne clouds.
The phrase and the day and the scene
harmonised in a chord."
James Joyce
A Portrait of the Artist as a Young Man

"The space of sky above its with the colour
of ever-changing violet and towards it
the wings of the doves lifted their feeble
the sunset. I would air stung its and
the phrase till our bodies glowed.
Once shadows entered in the silent street."
James Joyce
Ulysses





Cover Image

Museum of Literature Ireland, Dublin

Museum houses a host of literary treasures from the National Library collection, including the very first copy of James Joyce's Ulysses.

Welcome to Marcon's Heritage Newsletter.

Throughout this newsletter we highlight some of our recently completed, current and newly awarded projects. Ranging from listed buildings transformed into prestigious literature museums to the fit-out of new build developments that highlight the importance of renewable energy.

The variety of projects highlights Marcon's experience as a diverse and flexible fit-out contractor capable of delivering projects varying in scale and complexity across the UK and Ireland.

Enjoy the Read!

‘All Aboard’ at Fry Model Railway Museum

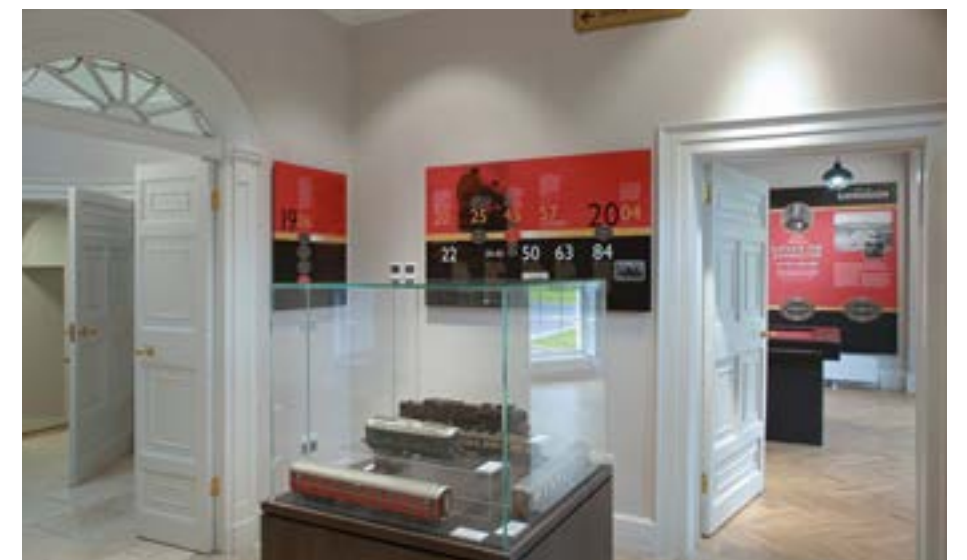
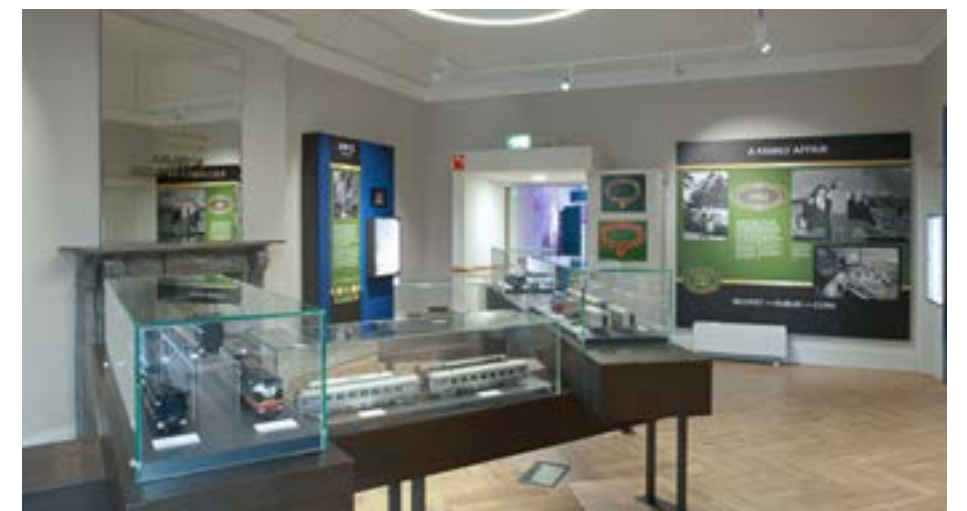
Fingal County Council and award-winning Edinburgh based design company Bright appointed Marcon to deliver the exhibition fit-out of the existing protected cottage and extended Casino Building for Fry Model Railway Museum in Malahide, Dublin. The new museum provides a home for the Fry Collection, Europe’s largest model railway collection, comprising more than 300 model trains and developed by Mr Cyril Fry. The train aficionado created his collection over a 40-year period from the 1920s until his death, hand-crafting in miniature all the train types that ran in Ireland since the 1840s.

The Museum opened to the public in January 2020.

Marcon was appointed as the principle exhibition contractor responsible for all the specialist joinery required for this unique museum. Their work included manufacturing and installing a combination of high-quality display cases, custom fixtures and furniture in keeping with the historic Casino building. Everything produced was custom designed and needed to meet the standards expected of a nationally significant museum. As usual Marcon provided a seamless

professional service with an ability to produce quality products within a restricted budget. Despite delays to the programme Marcon managed to accommodate client changes and continued to take a flexible and proactive approach throughout the project.”

Kate McHugh,
Director at Bright





Marcon completes final chapter at Museum of Literature Ireland.

Marcon has recently completed the fit-out of The Museum of Literature Ireland – a new landmark cultural centre in the heart of St Stephen's Green, Dublin.

Marcon worked closely with internationally acclaimed museum and exhibition designers Ralph Appelbaum Associates to complete the fit-out which offers immersive multimedia exhibitions, literary artefacts, historic house tours, research facilities and a digital broadcasting studio, as well as a

bookshop and a café; not to mention the rather beautiful and tranquil gardens at the back of Newman House.

The exhibition tells the story of Ireland's literary heritage, from its earliest storytelling traditions to its finest contemporary writers. On display is a host of literary treasures from the National Library collection, including the very first copy of James Joyce's *Ulysses*.

Marcon was responsible for the manufacture and installation of specialist joinery, display cases, bespoke metalwork, graphics and feature lighting throughout the space. The company's joinery workshop played a vital role in the manufacture of the specialist joinery ensuring the highest standard of finish was achieved.



Kylemore Abbey House and Gardens

Marcon has completed the exhibition fit-out at Kylemore Abbey, one of Ireland's best-loved and most iconic tourist attractions.

The famous Kylemore Abbey is situated in Pollacappul, Connemara, Co. Galway and is one of the most significant surviving houses and estates in the West of Ireland, and home to the Benedictine Nuns for nearly a century.

Marcon's heritage team carried out the interpretive fit-out of the rooms, manufacturing the specialist joinery throughout and managing the installation of bespoke display cases, life size jesmonite relief sculptures, graphics and audio-visual elements within the exhibition.

The project will promote and elevate Kylemore Abbey's significance and

standing as one of Ireland's premier cultural and historic sites by enhancing visitor's experience through a variety of ways including; printed panels, multi-media interactives, hands-on and self-discovery interpretation.





Patrick Kavanagh Visitor Centre

"We found Marcon to be very easy to work with and extremely efficient. They had a great approach towards offering solutions for the project, met all agreed deadlines and delivered high quality in terms of their craftsmanship and on-site support. We were delighted with their overall service and the final product."

Dympna Condra
Monaghan County Council

Monaghan County Council selected Marcon to deliver the manufacture and fit-out works of all bespoke exhibition furniture (plinths, map tables, handling tables, reception desk) graphics, display cases and interactives for the new Patrick Kavanagh Exhibition Centre in Inniskeen.

Patrick Kavanagh is regarded as one of the foremost Irish poets of the 20th century. The exhibition centre outlines Kavanagh's life story and includes paintings, informational panels and memorabilia items.

The refurbished centre has been designed by experienced interpretive designers Make

dot to serve both as an exhibition space celebrating the life and work of Patrick Kavanagh and a multipurpose performance venue facilitating a wide range of cultural and social events.

The centre opened to the public in January 2020.



Marcon and Haley Sharpe Design join forces for HMS Victory Design and Build

“HMS Victory is the jewel in the crown of Portsmouth Historic Dockyard. Visitors are already familiar with the dramatic story of the ship’s role at the Battle of Trafalgar. At the heart of the new gallery will be an immersive AV experience unlike anything else on site. We are extremely excited to be working with Marcon and hsd on this project and look forward to welcoming visitors to the new gallery which opens Spring 2020.”

Andrew Baines,
Deputy Director of Heritage, The
National Museum of the Royal Navy

Marcon in partnership with international designers, Haley Sharpe Design have been awarded the design and build contract for the interpretation and fit-out of the HMS Victory Gallery in Portsmouth.

We will work closely with The National Museum of the Royal Navy and HMS Victory Preservation Company to successfully deliver the £1.1 million project which will focus primarily on the ship itself and the Battle of Trafalgar and will transform the visitor experience drawing on key iconic artefacts and resources.

The gallery will be spread across two floors and create 620 m2 of new exhibition space. The interpretation will be multi-level so that visitors can decide how much information and knowledge they want or need to acquire as part of the visit and it will be delivered through a diverse range of media and means, appropriate for family

and intergenerational audiences. The new interpretation scheme will promote a sense of fun, exploration and discovery, where learning together through shared experiences is a key outcome for the project and will positively engage visitors.





Capturing Ecology: Hidden Worlds at the Ulster Museum

Marcon was appointed by National Museum of Northern Ireland to design, build and install 2 freestanding structures as part of a temporary exhibition at the Ulster Museum.

Capturing Ecology is an exhibition based around the British Ecological Society's annual photography competition, which

showcases research being undertaken by ecologists around the world.

It showcases how professional ecologists use specialist skills and technology to reveal the hidden parts of the natural world and allows visitors to engage with a world that they might not normally see.

The exhibition is also the centrepiece of the Northern Ireland Science Festival's collaboration with National Museums.

The exhibition will run from 11th February 2020 to the 22nd March 2020.



Oweninny Wind Farm Visitor Centre

Marcon has been awarded the contract for the exhibition fit-out in the new 700 m2 Oweninny Wind Farm Visitor Centre which will incorporate exhibition space; café; toilets and a retail area to support the Oweninny Wind Farm.

The exhibition will focus on science, engineering and technology related to renewable energy. It will promote initiatives

on caring for our planet through raising awareness of climate change and promoting the use of wind turbines. It will also consider the landscape in which the wind farm is based, characteristics of the natural environment, the bog flora, fauna and wider landscape.

Marcon has been responsible for specialist joinery, AV hardware & software,

interactives, graphics, display cases, signage, partitions, way finding and mechanical & electrical installations.

Fit-out works are due to begin on site in March 2020 with completion in May 2020.

Visit Derry Information Centre

“The designs for this are really very impressive and when completed will be world class. This project will enhance the entire Waterloo Place area of the city and bring new life and activity into a key retail area in the city centre.”

Michaela Boyle

Mayor of Derry City and Strabane District Council Cllr

Visit Derry Information Centre are relocating to Waterloo Place and Marcon has been selected by Derry City and Strabane District Council to work alongside award-winning interpretive designers DESIGNMAP to deliver the specialised fit-out and associated construction works.

Welcoming the announcement, Mayor of Derry City and Strabane District Council Cllr Michaela Boyle said it was fantastic news for the city and region.

The new premises comprise the ground floor of the former Ulster Bank building and will provide a vibrant, innovative and highly interactive visitor attraction and improved visitor experience, that will promote tourism within the city as well as a café and retail area.

Work has begun on site in January and will be open to the public in May 2020.



Group pictured at the announcement of the commencement of work on the new offices of Visit Derry at Waterloo Place. From left are Michelle Murray (DCSDC), Jenny O'Donnell (DCSDC), Paul McNaught (Department for Communities), Colin Kirkpatrick (Tourism NI), Mark O'Connor (Marcon Fit-Out), Aeidin McCarter (DCSDC) and Odhran Dunne (Visit Derry).

Marcon shoots for the stars at OM Dark Sky Park and Observatory

Marcon has been appointed to complete the fit-out works at the highly anticipated OM Dark Sky Park and Observatory in Davagh, County Tyrone. Marcon's heritage team will work closely with Tandem Design and Mid Ulster District Council to complete the fit-out of the new centre which includes an interactive exhibition.

The observatory is located in Davagh Forest close to the ancient Beaghmore

Stone Circles, at the foot of the Sperrin mountains, an area of outstanding natural beauty which is steeped in archaeological and cultural history.

The new centre is ideally placed as it has one of the 'darkest skies' in Ireland and is the north's only official 'dark sky' reserve. There is so little light pollution it will give visitors a unique opportunity to experience crystal clear views of star constellations.

The fast-track 4 week fit-out programme incorporated several specialist items including holographic installations, virtual reality headsets and colourful, accessible interpretation panels. The star attraction in the new observatory is the feature telescope which will allow visitors to explore our solar system.





Marcon Fit-Out
A2 Fergusons Way
Kilbegs Road, Antrim
BT41 4LZ

Tel: 028 9446 1222
Fax: 028 9446 4333
hello@marconfitout.com
www.marconheritage.com